



WESTBOURNE ACADEMY  
ENGLISH FOR ALL NATIONS



# Bournemouth

2020-2021

Accredited by the  
 BRITISH  
COUNCIL  
for the teaching  
of English in the UK



# Welcome

Improve your English in England! Improve your understanding of British culture, compare it to your own culture and other cultures from around the world. You can do all of these things at our international language school in Bournemouth.

Speaking English today is an essential skill to be able to communicate globally as well as improving your career prospects. Join us and improve your English skills with the support of our friendly, experienced and qualified teachers, visit wonderful places in England, and enjoy the great variety of activities we have to offer.

One of the strengths of Westbourne Academy is the warm welcome we offer to all our students.

We wish you a successful and enjoyable experience in the UK.



**Richard**  
**Managing Director**



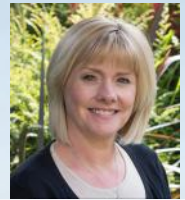
**Mark**  
**Head of School**



**Erin**  
**Head of Administration**



**Eloise**  
**Director of Studies**








**Vanessa**  
**Head of Accommodation**



## Contents

Location **4** | Student Resources & Facilities **5** | Courses **6+7** |  
Accommodation **8** | Arrival **9** | Culture, Sport and Social Programme **10+11**  
| Westbourne Academy & Bournemouth **11+12** | Enrolment Procedure **13** |  
University & College Advice **14**

# Why choose Westbourne Academy?

 <p>Quality school at good prices</p>	 <p>General English, IELTS Preparation, Cambridge FCE &amp; CAE courses</p>
 <p>Short walk to the beach</p>	 <p>Free online materials for students</p>
 <p>Carefully chosen and regularly inspected accommodation</p>	 <p>24-hour emergency support</p>
 <p>Free WiFi in the school and all accommodation</p>	 <p>On site café offering freshly prepared food at good prices</p>
 <p>Social programme offering interesting and varied activities every week and staff-led excursions</p>	 <p>Friendly staff and school atmosphere</p>
 <p>Free course materials with your course</p>	 <p>Supported by New City College, a large, successful, government college in London</p>

# Ideal Location

- Westbourne Academy is in a beautiful location within walking distance from the sandy beaches of Bournemouth, and only a few steps away from the picturesque shopping centre of Westbourne.
- In this safe and friendly part of Bournemouth, you will find banks, a post office, traditional English pubs, international restaurants, and great shopping facilities.



- Bournemouth town centre and Poole are only 20 minutes by bus.
- These towns are world famous as international holiday resorts where you can find many exciting attractions.

- Bournemouth is also a popular area for education, with over 30,000 students, it is the most popular place to study English in the UK, after London.





# Student Learning Resources

- Intake test and welcome information on your first day
- Friendly, qualified teachers
- Interactive whiteboards in the main classrooms
- Use of coursebooks and free materials
- Modern teaching materials. The students can access free online supplementary learning materials as part of this course
- Regular progress tests to assess your level
- Tutorials with your teachers every 8 weeks to guide your learning
- Talk to the academic managers at any time
- Leaving Certificate at the end of your studies (students attending a course for 4 weeks or more will receive an additional report from their teacher)
- FREE WiFi available throughout the whole school
- FREE use of the self-study facilities (Listening Centre & Reading Centre)



COURSE	No. of Weeks	Hours	Maximum Class Size	Ages	Levels	Ge En
General Main English	2+	13 hours and 20 minutes (20 lessons)	16	16+	Beginner to Advanced (CEFR A1 - C2)	
English Plus	2+	18 hours and 40 minutes (28 lessons)	16	16+	Elementary to Advanced (CEFR A2 - C2)	
Extra Intensive	1+	26 hours and 40 minutes (40 lessons)	16	16+	Elementary to Higher Intermediate (CEFR A2 - B2)	
Cambridge First (FCE) and Advanced (CAE) Exam Preparation	10-15	18 hours and 40 minutes (28 lessons)	16	16+	(FCE) Intermediate to Higher Intermediate (CEFR B1-B2)	
					(CAE) Higher Intermediate to Advanced (CEFR B2-C2)	
Cambridge IELTS Exam Preparation	8	13 hours and 20 minutes (20 lessons)	16	16+	Intermediate to Advanced (CEFR B1-C2)	
Junior Programme	1+	13 hours and 20 minutes (20 lessons)	16	14 - 17	Elementary to Advanced (CEFR A2 - C2)	

**For further information on all our courses (including 1 to 1), please see our website.**

General English	Exam Prep	End of Course Certificate	Additional Info
✓		✓	The lessons cover the most important aspects of learning English, including vocabulary, grammar and pronunciation, which will help you improve your speaking, listening, reading and writing.
✓		✓	General English Course + extra practice.
		✓	General English Course in the morning and afternoon.
	✓	✓	These examination courses include preparation and practice for the Reading and Use of English, Listening, Writing and Speaking components of the exam.
	✓	✓	
	✓	✓	This course is for students who need to take the Academic IELTS exam to apply to an English speaking University. This course focuses on the practice of exam techniques to prepare for the IELTS exam.
✓		✓	This programme is designed for students with similar ages and interests and includes vocabulary, grammar and pronunciation, which will help you improve your speaking, listening, reading and writing. Optional social/activity programme (at additional cost)



# Accommodation

## All Westbourne Academy Accommodation Includes:

- Free WiFi
- Breakfast and Dinner every day
- Lunch at weekends (Saturday and Sunday)
- One laundry wash a week
- Opportunities to practise your English
- Learn about British Culture
- 24-hour emergency telephone service
- Support from our Head of Accommodation / Welfare Officer
- A place to study in your bedroom
- Bedroom cleaned weekly





# Arrival

Westbourne Academy can arrange a taxi service from most UK airports to the homestay on request.

There is also good public transport by train or coach from all airports to Bournemouth.

Homestay providers are carefully selected for their friendliness as well as their experience in taking care of students.

## Your homestay provider will:

- Welcome you when you arrive
- Give you information about the area you will be staying in
- Explain to you how to get to Westbourne Academy
- Have meals with you and help you practise your spoken English

On your first day at school, you will have a test so we know your English level and can place you in the correct class. You will then have an induction which will give you useful information to help you enjoy your time at Westbourne Academy.

# Culture, Sports and Social Programme

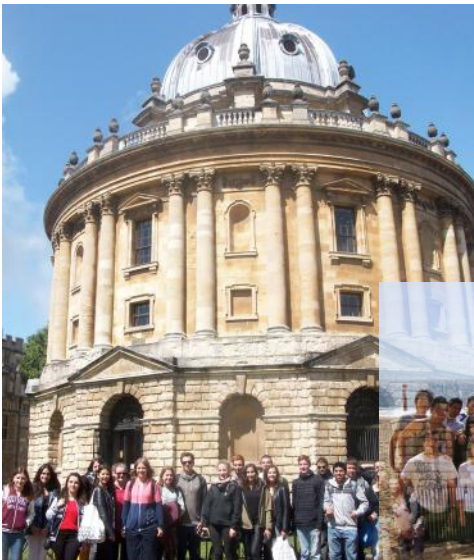
The school organises a full and exciting programme, giving students the opportunity to make friends and practise their English outside the classroom. Below are a list of activities and approximate prices.

## KEY

£	up to £10
££	£11 - £20
£££	£21 - £45

Sports and activities organised by staff include:

- Football **FREE**
- Table tennis **FREE**
- Beach volleyball **FREE**
- Discussion evenings **FREE**
- Movie Nights **FREE**
- Laser quest **£**
- Indoor Climbing **£**
- Bowling **£**
- Summer BBQs **£**
- Open top bus evening tours **£**
- Indoor mini golf **£**
- International cultural parties **£**
- Interactive quizzes **£**
- Splashdown water park **££**
- Theatre trips **£££**



# Culture, Sports and Social Programme

These are just some of the facilities and activities available near Westbourne Academy which we can help you to participate in.

- Regular 5k park runs **FREE**
- Tennis and squash **£**
- Yoga classes **£**
- Martial arts classes **£**
- Bicycle hire **£**
- Gym monthly membership **££**
- Rugby matches **££**
- Golf **£££**
- Many water sports including swimming, windsurfing, sailing, stand-up paddle boarding, surfing, kayaking **£££**

There are also guided, full day excursions to destinations including:

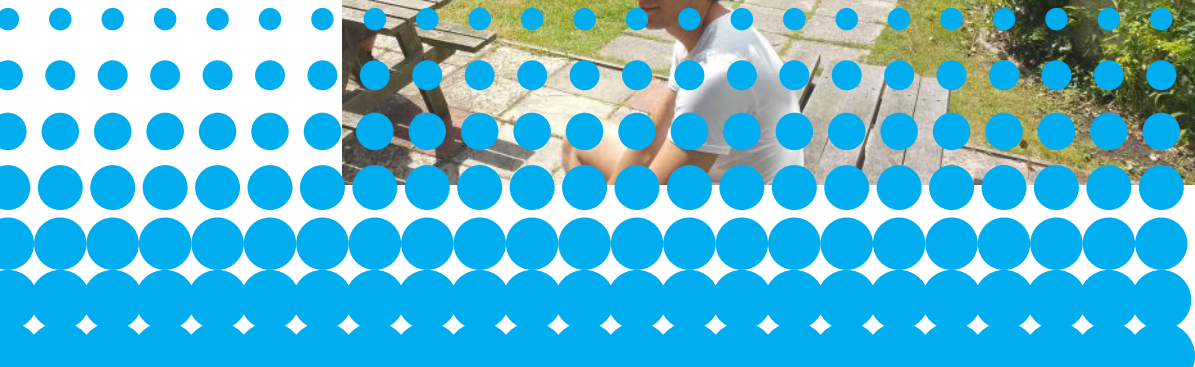
- London **£££**
- Bath and Stonehenge **£££**
- Oxford **£££**
- Salisbury/Winchester **£££**
- Jurassic Coast **£££**
- Brighton **£££**



**Please see our website  
for the monthly  
activity programme**



# Westbourne Academy & Bournemouth

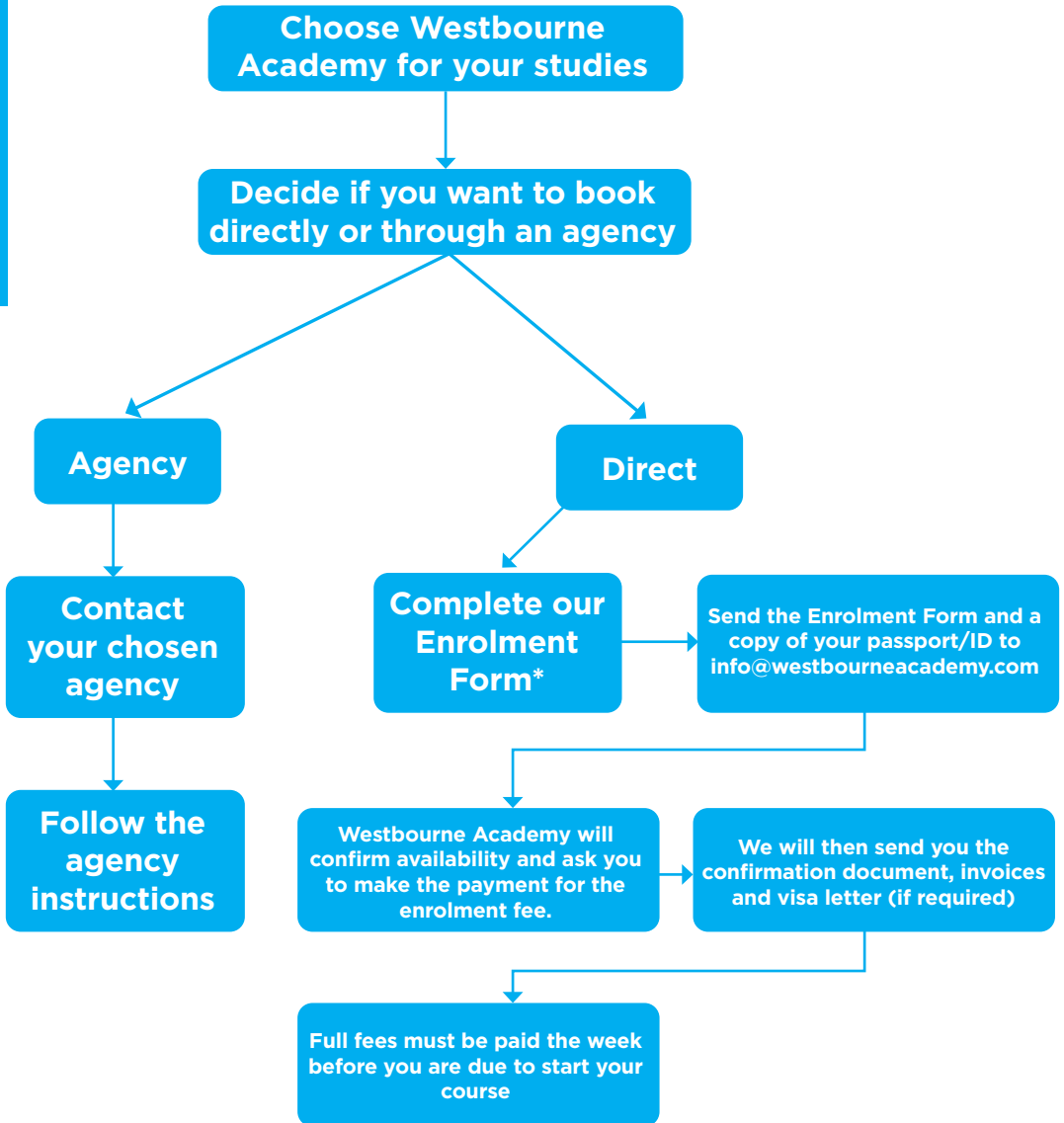






# Enrolment Procedure

ENROLMENT PROCEDURE



\*Download from our website or contact us.

\*For full enrolment Terms and Conditions please visit our website.

# University and College Advice Service

Bournemouth has two universities. More than 30,000 English students attend them.

Westbourne Academy has close connections with these universities and colleges and provides a free service, which assists students through the entire application process.

This service includes:

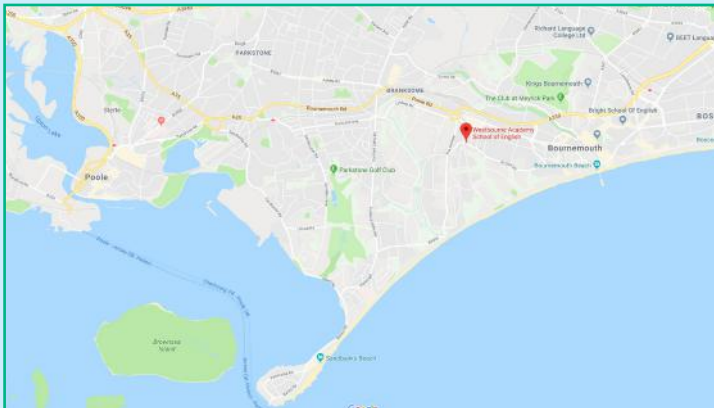
- Giving advice on the different types of universities and colleges in Bournemouth.
- Providing advice to the student on the appropriate course relevant to the student's needs.
- Giving advice on which English examinations are necessary to enter universities or colleges.
- Help with completing the application form and interview preparation.
- Arranging interviews.







## Bournemouth



 [westbourneacademybournemouth](https://www.facebook.com/westbourneacademybournemouth)

 [westbourneacademybournemouth](https://www.instagram.com/westbourneacademybournemouth)

**Westbourne Academy Bournemouth**  
31 Alumhurst Road, Westbourne,  
Bournemouth BH4 8EN  
T. +44 (0)1202 75 27 77  
[info@westbourneacademy.com](mailto:info@westbourneacademy.com)

[www.westbourneacademy.com](http://www.westbourneacademy.com)

