



CENTRE OF ENGLISH STUDIES

ADULT BROCHURE



7 DESTINATIONS... ENDLESS POSSIBILITIES



Jonathan Quinn
Marketing Director



Michael Quinn
UK Director

WELCOME TO CES

“History and Recognition”

Founded in 1979, CES has over 35 years’ experience teaching the English language to students from across the globe.

We are one of the most respected English language schools in Europe. The staff in our schools have an international reputation for their professionalism, friendliness and the attention they give to each and every student.

All of our teachers in Ireland hold a university degree plus an ACELS recognised teaching qualification. In the UK, all teachers have the Trinity TESOL Certificate or CELTA qualifications, with many holding specialist EFL teaching diplomas and degrees. Across all of our schools in Ireland and the UK, our teachers are chosen not only for their experience, but also for their enthusiasm, positive attitude and ability to make language learning FUN!

All CES schools offer homestays and a wide variety of accommodation options.

CES will employ the combination of our vast experience, in-depth academic knowledge, and efficient administrative skills to deliver courses that will meet your exact requirements.

CES is a multi-award winning school that has won accolades from independent, external sources.

CES is recognised and accredited by the **British Council** in the UK and **ACELS** (the Irish Department of Education) in Ireland. CES Ireland is also a founder member of Marketing English in Ireland (MEI).

CES is also proud to have a number of our year-round schools as full **EAQUALS** members. CES Dublin, CES Leeds and CES Harrogate are **official IELTS Test Centres**. CES Harrogate is an **official Cambridge Exam Test Centre** and CES Dublin is an **official Pearson PTE Test Centre**. CES is a proud **IALC member school**.

All our schools in the UK are full members of **English UK**.

Our motto is **Care – Excellence – Success**

CONTENTS

OUR CENTRES



DUBLIN 8



LONDON 10



OXFORD 12



EDINBURGH 14



LEEDS 16



WORTHING 18



HARROGATE 20

OUR COURSES

- 22 STANDARD COURSE
- 24 INTENSIVE COURSE
- 25 COMBINATION COURSE
- 26 IELTS PREPARATION
- 27 CAMBRIDGE EXAM PREPARATION
- 28 ENGLISH FOR PROFESSIONALS
- 29 GENERAL ENGLISH WITH BUSINESS
- 29 MULTI-DESTINATION
- 30 LONG TERM
- 30 WORK EXPERIENCE
- 31 ENGLISH FOR TEACHERS/CLIL

INFORMATION

- 4 LIFE AT CES
- 5 SOCIAL CES
- 5 MEMBERSHIPS AND ACCREDITATIONS
- 6 STUDYING AT CES
- 32 ACCOMMODATION
- 34 SOCIAL PROGRAMME/YELLOW SHIRTS
- 35 GENERAL INFORMATION



WHY CHOOSE CES?

- Choice of 7 AMAZING locations in Ireland and the UK
- Family run business with a personal touch
- International reputation for quality teaching and staff friendliness
- Official IELTS test centres in Dublin, Leeds and Harrogate
- Official PTE Academic test centre in Dublin
- Students from over 66 countries worldwide
- Customised buildings in fantastic locations
- Free CES Online e-Learning Package
- Multi-award winning schools
- Competitively priced courses
- Excellent homestay accommodation
- Residential accommodation available in most of our centres
- Excellent facilities
- Exciting and comprehensive year-round social programme

“Over 35 years’ experience in helping our students improve their English skills”

LIFE AT CES

On arrival at your airport of choice, CES can arrange to have you collected and transferred to your homestay or residence. The majority of our students stay in carefully selected homestays but we also provide residential self-catering accommodation in many of our centres. If you want a transfer, the CES representative will wait for you in the airport and take you directly to your accommodation.

HOMESTAY In homestay accommodation, you will probably be staying with a student from a different country. Your homestay will make you feel welcome and will provide you with clean bed linen and bathroom towels. All homestays will also provide breakfast and dinner.

REGISTRATION On your first day in any of the CES centres, we will ask you to complete a registration form. You will have an English language placement test to accurately determine your English language level and following this, a welcome talk from the centre Principal to give you more information on your centre and the city.

e-LEARNING All students get free access to CES Online, our fantastic FREE e-Learning platform, before arrival. Here you will find a wealth of material and resources that will help your progress before, during and after your course. You will also receive our two cutting-edge mobile apps which will allow you to study your grammar on the go and keep up to date with all social activities.

SEE THE CULTURE CES arranges an exciting and varied social and cultural programme in all of our centres. Be it a visit to Buckingham Palace or a tour of Dublin Castle, there are many different options available. Whether in England, Scotland or Ireland the CES teams will make sure you see the best they have to offer.

SOCIAL CES

At CES we understand that learning and improving your English language skills is the main reason you are with us, but it is also a fantastic opportunity to make friends from around the world. Students can take full advantage of the varied and exciting social and cultural programmes in each of our locations, giving everyone the chance to meet in an informal setting, as well as to experience the history and culture of Ireland and the UK.

MEMBERSHIPS & ACCREDITATIONS

ACCREDITATIONS & MEMBERSHIPS		DUBLIN	LONDON	OXFORD	EDINBURGH	LEEDS	WORTHING	HARROGATE
	ACELS - Irish Department of Education	■						
	British Council		■	■	■	■	■	■
	English UK		■	■	■	■	■	■
	International Association of Language Centres	■	■	■	■	■	■	■
	Eaquals	■	■				■	
	International English Language Testing System	■				■		■
	Marketing English in Ireland	■						
	English UK North					■		■
	ISI Educational Oversight		■	■		■	■	
	Association of Language Travel Organisations	■	■	■		■	■	



STUDYING AT CES

“A unique learning experience”

At CES, we strive to make learning the English language a memorable and fun experience. Our school locations, teaching staff and administration will ensure you can focus on improving your English Language skills in a relaxed, friendly environment.

Whether in the classroom or using the CES Online e-learning platform at home, our teachers’ main focus will be you and helping you make the most of your time at CES.

From the moment you take your initial English language placement test, our focus will be to ensure that you improve your English skills and develop a stronger and better use of this wonderful language.

NEEDS ANALYSIS

Your needs are central to the weekly planning process. Each week, the teachers will discuss your needs and progress so that the plan is tailored to your requirements and you achieve your aims.

SOCIAL PROGRAMME

At CES, the social programme is designed to help you get the most out of your stay and truly experience Ireland or the UK. We offer afternoon activities, Monday to Friday, every week of the year. We also offer a selection of evening activities each week in all our centres. Throughout the year, we have full day excursions to a selection of historical sites and places of cultural interest, every weekend.

SELF-ACCESS CENTRE

All CES centres offer the most up to date technology and materials for students to use at any time. There is FREE WI-FI throughout all of our centres and each centre has a dedicated computer room with free internet access.

CES ONLINE LEARNING

A gateway to the school on the web, CES Online is designed to complement all of the current facilities of the school. From social programme activities to online tutorials, the system offers students remote access to the world of CES. The Front Desk App and the Grammar App allow students to access the social, administrative and educational aspects of school life from their mobile phones.

GROUP TUITION

In our language development classes, students focus on skills such as grammar, vocabulary, pronunciation, writing and listening.

TUTORIAL

Students have regular, one-to-one tutorials with their teachers to design a personalised study plan and discuss progress and areas to work on.

CONVERSATION

These classes give you extra practice to use the new grammar and vocabulary you have gained. Your teacher will provide error correction to help you meet your learning goals.

EXAM PREPARATION

CES offers a range of examination preparation courses that help you practise your exam skills and techniques. We integrate IELTS preparation with your course work in all centres and a dedicated examination centre located in our Dublin, Leeds and Harrogate schools. We also offer Cambridge, TOIEC and TOEFL preparation courses.

UNIVERSITY GUIDANCE

Discuss how CES can guide you in your potential career paths with the Director of Studies.

CES DUBLIN SAMPLE WEEKLY TIMETABLE

	MONDAY	TUESDAY	WEDNESDAY	THURSDAY	FRIDAY
9.00 - 11.00	Getting to know you – Needs Analysis and class warm-up activity	Grammar Workshop	Multimedia work in Self-Access Centre – grammar, vocabulary and pronunciation	Vocabulary development	Everyday English – phrases and techniques for everyday situations
11.00 - 11.20	COFFEE BREAK				
11.20 - 13.00	Reading and Listening – authentic materials	Team Debate – discussion of current topic	Student Project Work – Irish or UK Culture	One to one tutorial with Teacher	Revision and Weekly Progress Test
13.00 - 14.00	LUNCH BREAK				
14.00 - 16.00	Welcome Walk - orientation tour with CES teacher	OPTIONS:	OPTIONS:	OPTIONS:	EXCURSION
	Afternoon visit to the Guinness Storehouse or Dublin Castle	Conversation – practising speaking and listening or IELTS or Business Class or One-to-One Lessons	Conversation – practising speaking and listening		Visit to Trinity College
	Guided Study in the Self-Access Centre		or IELTS or Business Class or One-to-One Lessons	IELTS practice	or Guided Study
	CES Online Guided e-Learning			or Business Class or One-to-One Lessons	or University Guidance
HOMEWORK	Vocabulary building	Project preparation	Grammar exercises	Revision for test	Writing

CES DUBLIN
 31 DAME STREET,
 DUBLIN 2, IRELAND
 T | +353 (0)1 671 4233
 F | +353 (0)1 671 4425
 E | INFO@CES-SCHOOLS.COM

LIKE US AT
 FACEBOOK.COM/CESDUBLIN

FOLLOW US AT
 TWITTER.COM/@CESDUBLIN

CES DUBLIN IS AN OFFICIAL IELTS AND PEARSON TEST CENTRE

DUBLIN

“Study in the centre of Europe’s most vibrant city”

Our schools have the perfect location, right in the heart of the historic city of Dublin. All the main tourist attractions such as Trinity College, Dublin Castle and Temple Bar are just a few minutes’ walk away. We are around the corner from Dublin’s best shopping area, Grafton Street, and the beautiful and relaxing city park, Stephen’s Green.

“Friendly and fun” are the words most visitors use to describe this city, and our students always agree! Learn English in the city of Joyce, Beckett and Wilde and make new friends on great nights out. Visit other fantastic cities such as Galway or Belfast, both just over two hours travel away.

- 

Wi-Fi
- 12**
average class size
- 23**
year-round classes
- 40**
Summer classrooms
- 25**
computers available
- 14**
maximum per class
- 16**
minimum age



FACILITIES

- 23 year-round classes with free Wi-Fi connectivity
- Student common room
- Self-access reference library and study facilities
- Student computer room with teacher assistance
- Second student computer room with printing facilities
- CES Café
- 2 student roof top gardens
- X-Box

TRAVEL

- 

Rail Services
- 

Bus Services
- 

Cycle Lanes
- 

Tram Services

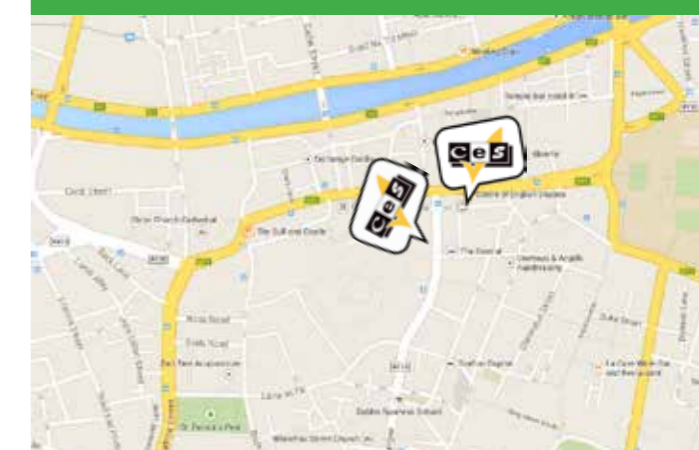


“I decided to study here because I heard that it’s the best English school in Dublin, and I recommend it! It’s a great place to learn and practice English, the teachers and staff are very nice, and there is a great social programme too! This school has everything a student needs”. - *Thais Teperino Pereira, Brazil*

COURSES

Standard Course	For details see page	22
Intensive Course	For details see page	24
Combination Course	For details see page	25
IELTS Preparation Courses	For details see page	26
Cambridge Exam Preparation Courses	For details see page	27
English for Professionals	For details see page	28
General English with Business	For details see page	29
Multi-destination Course	For details see page	29
Long Term	For details see page	30
Work Experience	For details see page	30
English for Teachers	For details see page	31

EXCELLENT CITY CENTRE LOCATION



ACCOMMODATION

- Homestay
- Residential
- Hotels/ Guesthouses/ Hostels

see page 32



ACCOMMODATION
Homestay

Residential

Hotels/
Guesthouses/
Hostels

see page 32

COURSES

Standard Course	For details see page	22
Intensive Course	For details see page	24
Combination Course	For details see page	25
IELTS Preparation Courses	For details see page	26
Cambridge Exam Preparation Courses	For details see page	27
English for Professionals	For details see page	28
General English with Business	For details see page	29
Multi-destination Course	For details see page	29
Long Term	For details see page	30
Work Experience	For details see page	30
English for Teachers	For details see page	31

LONDON

“Learn it, live it, love it”

London is a fantastic place to study English; full of history, culture and exciting things to do. Wimbledon, where the school is located, is full of interesting shops, cafés, bars and restaurants. The English author Samuel Johnson believed that if you are tired of London, you are tired of life. Here at CES, we agree with him!

Visit Buckingham Palace and Hyde Park, go shopping on London’s famous Oxford Street, enjoy the culture of the many wonderful museums and see some of the world’s greatest actors in a play or musical in the West End. The college has wonderful study, leisure and social facilities and a fantastic activity programme all year round.

FACILITIES

- 11 year-round classes with free Wi-Fi connectivity
- Student common room
- Self-access reference library and study facilities
- Student computer room with printing facilities
- Student garden with patio area and seating

TRAVEL



PRESTIGIOUS LONDON SUBURB



“What I like about CES is the amazing, friendly environment and also the way of teaching. The teachers are very professional and very polite. I have gained not just theoretical knowledge but also many great friends for life.” - Sandra Balazovicova, Slovak Republic

CES LONDON
NELSON HOUSE
271 KINGSTON ROAD
WIMBLEDON, SW19 3NW ENGLAND
T | +44(0)20 8543 5150
F | +44(0)20 8540 1416
E | LONDON@CES-SCHOOLS.COM

LIKE US AT
FACEBOOK.COM/CESLONDON
FOLLOW US AT
TWITTER.COM/@CESLONDON

8
average
class size

11
year-round
classes

20
Summer
classrooms

17
PCs & Tablets
available

14
maximum
per class

16
minimum
age



ACCOMMODATION

Homestay

Residential

Hotels/
Guesthouses/
Hostels

see page 32

OXFORD

“The city of dreaming spires”

Home to one of the oldest and most famous universities in the world, where could be better to continue your education? Our school is located in the beautiful village of Wheatley, just nine kilometres from the centre of Oxford city.

Mix traditional village life with the excitement of great student nights out in the city! Enjoy tranquil days in the many city parks and museums or in the famous scenic region of The Cotswolds, only a short journey away. Feel inspired as you walk around this intimate city with its classical architecture and young student population.

CES OXFORD
67 HIGH STREET, WHEATLEY,
OXFORDSHIRE, OX33 1XT ENGLAND
T | +44(0)1865 874786
F | +44(0)1865 873351
E | OXFORD@CES-SCHOOLS.COM

LIKE US AT
FACEBOOK.COM/CESOXFORD

FOLLOW US AT
TWITTER.COM/@CESOXFORD

- WiFi
- 6**
average
class size
- 10**
year-round
classes
- 12**
Summer
classrooms
- 20**
PCs & Tablets
available
- 9**
maximum
per class
- 16**
minimum
age

FACILITIES

- 10 year-round classes with free Wi-Fi connectivity
- Common room with billiard table and self-service kitchen
- Self-access reference library and study facilities
- Student computer room with printing facilities
- Student garden with BBQ and seating
- Students have access to the school Mon-Thurs till 10pm to watch movies / play X-Box

TRAVEL

- Rail Services
- Bus Services
- Cycle Lanes

“It’s a really cool school for meeting people from other countries. They are really good teachers here. There is a great social programme and the school is really well organised. I would recommend this school to all my friends.”
- Stefanie Steinegger, Switzerland

COURSES

Standard Course	For details see page	22
Intensive Course	For details see page	24
Combination Course	For details see page	25
IELTS Preparation Courses	For details see page	26
Cambridge Exam Preparation Courses	For details see page	27
English for Professionals	For details see page	28
General English with Business	For details see page	29
Multi-destination Course	For details see page	29
Long Term	For details see page	30
Work Experience	For details see page	30
English for Teachers	For details see page	31

WHEATLEY VILLAGE



ACCOMMODATION
 Homestay
 University Self-catering Student Residences
 Bed & Breakfast
 see page 32



COURSES

Standard Course	For details see page	22
Intensive Course	For details see page	24
Combination Courses	For details see page	25
IELTS Preparation Courses	For details see page	26
Cambridge Exam Preparation Course	For details see page	27
English for Professionals	For details see page	28
General English with Business	For details see page	29
Multi-destination Course	For details see page	29
Long Term	For details see page	30
Work Experience	For details see page	30
English for Teachers	For details see page	31

EDINBURGH

“Scotland’s historic city of learning”

Edinburgh has been Scotland’s capital city since the 15th century and is the second most visited tourist city in the United Kingdom. History, culture, fun and nature are everywhere. The city is well known for its beautiful architecture, medieval Old Town and Georgian New Town. Edinburgh is famous for its award-winning summer festivals and there’s even a dormant volcano right on its doorstep!

A relatively small city, the beauty of Edinburgh is that everything is just a short stroll away and the Scottish people will make you feel welcome and glad to be there!

CES Edinburgh is located right in the heart of the city so you will have plenty of time to discover and explore.



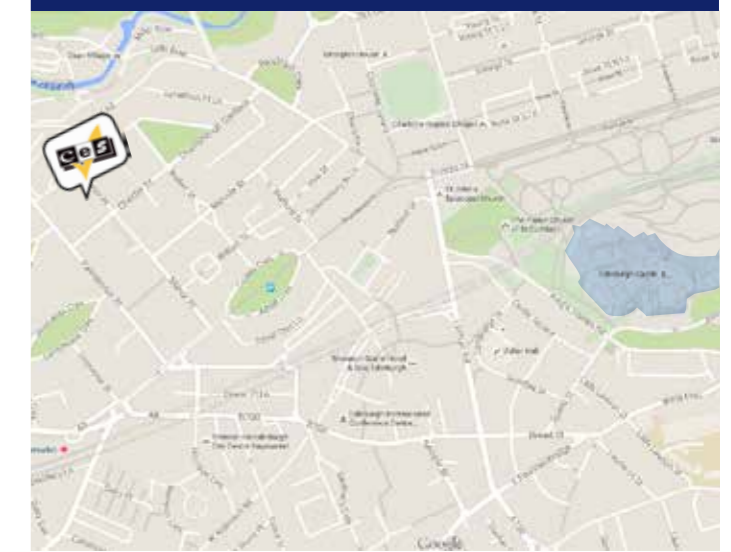
FACILITIES

- 10 year-round classes with free Wi-Fi connectivity
- Student common room
- Student computer room with reference library and study facilities
- Student garden with BBQ and seating area
- Dedicated Teacher Training suite

TRAVEL



CITY CENTRE LOCATION



CES EDINBURGH
 54 MANOR PLACE
 EDINBURGH
 EH3 7EH
 SCOTLAND
 T | +44 131 226 5004
 F | +44 131 226 5003
 E | EDINBURGH@CES-SCHOOLS.COM

LIKE US AT
 FACEBOOK.COM/CESEDINBURGH

FOLLOW US AT
 TWITTER.COM/@CESEDINBURGH

CES LEEDS
 9 PARK PLACE
 LEEDS, LS1 2RU ENGLAND
 T | +44 113 2427171
 F | +44 113 2458471
 E | LEEDS@CES-SCHOOLS.COM

LIKE US AT
 FACEBOOK.COM/CESLEEDS

FOLLOW US AT
 TWITTER.COM/@CESLEEDS

LEEDS

“The very heart of Northern England”

CES Leeds is located in the centre of this great sporting and shopping city. As a university city, it's big enough to find plenty to do, yet small enough to get around easily. Our school is located in the financial and legal district and is just minutes away from some of the best tourist attractions and shopping streets. The large student population means the nightlife is never dull and there is always somewhere to go.

Leeds is a vibrant, modern city surrounded by spectacular countryside, such as the Yorkshire Dales – a wonderful area to go walking in. Leeds is also a great place from which to visit other famous northern English cities, such as Manchester and Liverpool.

CES LEEDS IS AN OFFICIAL IELTS TEST CENTRE
 NEW IN 2017 - NOW A CELTA TRAINING CENTRE

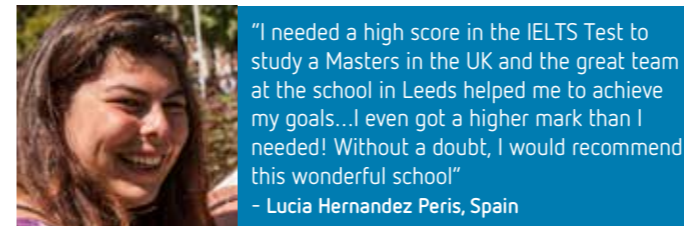
- 
- 10**
 average class size
- 9**
 year-round classes
- 20**
 Summer classrooms
- 15**
 PCs & Tablets available
- 14**
 maximum per class
- 16**
 minimum age

FACILITIES

- 11 year-round classes with free Wi-Fi connectivity
- Student common room with tea and coffee making facilities
- Self-access reference library and study facilities
- Student computer room with printing facilities

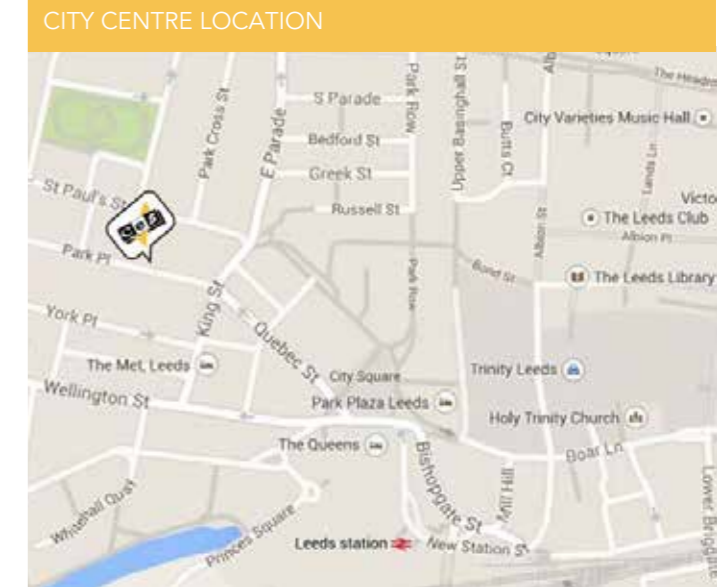
TRAVEL

- 
- 
- 



COURSES

Standard Course	For details see page	22
Intensive Course	For details see page	24
Combination Course	For details see page	25
IELTS Preparation Courses	For details see page	26
Cambridge Exam Preparation Courses	For details see page	27
English for Professionals	For details see page	28
General English with Business	For details see page	29
Multi-destination Course	For details see page	29
Long Term	For details see page	30
Work Experience	For details see page	30



ACCOMMODATION
 Homestay
 Residential
 Hotels/
 Guesthouses/
 Hostels
 see page 32

CES WORTHING
 12 STOKE ABBOTT ROAD,
 WORTHING, WEST SUSSEX
 BN11 1HE, ENGLAND
 T | +44 (0)1903 231330
 F | +44 (0)1903 200953
 E | WORTHING@CES-SCHOOLS.COM

LIKE US AT
 FACEBOOK.COM/CESWORTHING
 FOLLOW US AT
 TWITTER.COM/@CESWORTHING

WORTHING

“Life on the sunny South Coast”

CES Worthing is located just 8 minutes’ walk from the centre of Worthing and just 15 minutes’ walk from its beautiful beaches. Located on the south coast, Worthing is just 90 minutes by train from London and 20 minutes from Brighton.”

Situated at the foot of the beautiful South Downs, Worthing is known to have one of the sunniest climates in England. With a population of just over 100,000, this is a safe and secure environment in which to improve your English. CES is the only British Council accredited school in Worthing.

- 
- 10**
average class size
- 14**
year-round classes
- 20**
Summer classrooms
- 16**
PCs & Tablets available
- 14**
maximum per class
- 16**
minimum age



FACILITIES

- 14 year-round classes with free Wi-Fi connectivity
- Tea and coffee making facilities
- Self-access reference library and study facilities
- Student computer room with printing facilities
- X-Box
- 3 outdoor gardens with seating areas

TRAVEL




Rail Services



Bus Services



Cycle Lanes

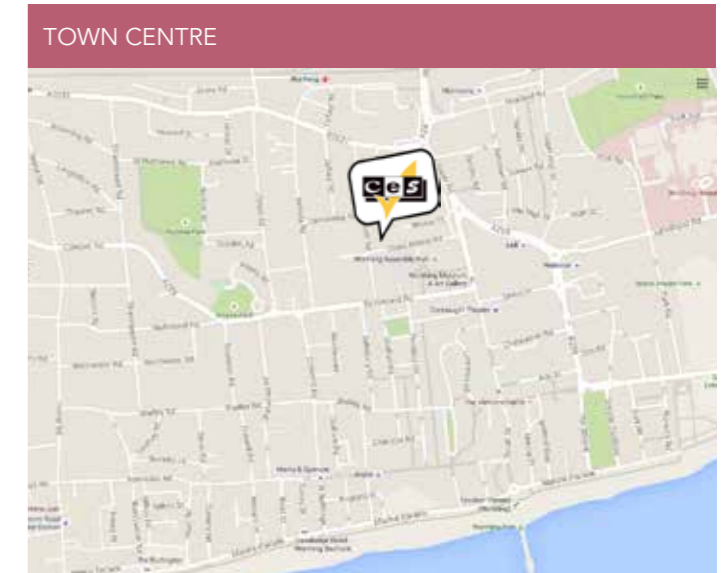


“Studying at CES has improved my English, but most importantly I am having fun while learning. The classes are interactive and have an exciting feel to learning. All activities by the social team, known as the ‘Yellow Shirts’, help form friendships with other international students”.

– Ahmed Yahya, Saudi Arabia

COURSES

Standard Course	For details see page	22
Intensive Course	For details see page	24
Combination Course	For details see page	25
IELTS Preparation Courses	For details see page	26
Cambridge Exam Preparation Courses	For details see page	27
English for Professionals	For details see page	28
General English with Business	For details see page	29
Multi-destination Course	For details see page	29
Long Term	For details see page	30
Work Experience	For details see page	30
English for Teachers	For details see page	31



ACCOMMODATION

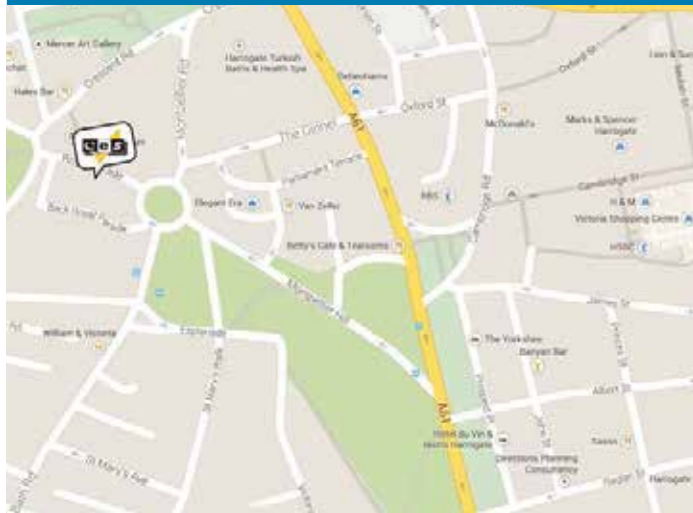
Homestay

Hotels

Bed & Breakfast

see page 32

CITY CENTRE LOCATION



"I am studying IELTS, because I aim to go to college and major in Bio Engineering. I feel English is very important to study abroad. My teachers in CES are excellent. My weaknesses are speaking and writing and they focus on both for me."
- Hyeongil Choi, South Korea

FACILITIES

- 6 year-round classes with free Wi-Fi connectivity
- Student common room with tea and coffee making facilities and lunch service
- Self-access reference library and study facilities
- Student computer room with printing facilities

TRAVEL



HARROGATE

"The historic English spa town"

Repeatedly voted the best place to live in the UK, Harrogate has been called "The Jewel of the North" and has been visited for generations by people for its clean air and healthy living. Harrogate became famous in the 18th and 19th centuries as a spa town and welcomed a host of famous people from Royalty to Agatha Christie.

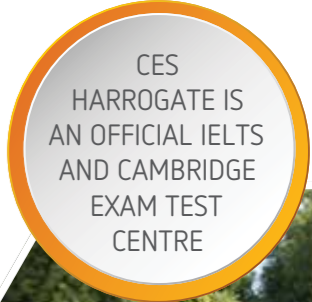
Harrogate is also the gateway to the Yorkshire Dales and areas of outstanding natural beauty. Located in the centre of this beautiful Victorian town, CES Harrogate is just minutes from all the main tourist attractions and sights. A perfect place to improve your English.

CES HARROGATE

8A ROYAL PARADE,
HARROGATE, HG1 2SZ,
HARROGATE, UK
T | +44 (0)1423 531969
E | HARROGATE@CES-SCHOOLS.COM

LIKE US AT
FACEBOOK.COM/CESHARROGATE

FOLLOW US AT
TWITTER.COM/@CESHARROGATE



COURSES

Standard Course	For details see page	22
Intensive Course	For details see page	24
Combination Course	For details see page	25
IELTS Preparation Courses	For details see page	26
Cambridge Exam Preparation Courses	For details see page	27
English for Professionals	For details see page	28
General English with Business	For details see page	29
Multi-destination Course	For details see page	29
Long Term	For details see page	30
Work Experience	For details see page	30

ACCOMMODATION

Homestay

Hotel

Bed & Breakfast

see page 32





Students taking the Standard General English course can also think about expanding their course with:

- CES Self-Access
- CES Social Programme
- IELTS Preparation
- Conversation Classes
- Business English
- One-to-One Lessons

STANDARD COURSE

COURSE DETAILS

This is the **most popular** course in all CES schools. The Standard General English Course takes place every morning from Monday to Friday; leaving you free to join the Social Programme or study on our CES Online e-learning platform and in our Self-Access facilities every afternoon.

Your morning lessons are divided into two parts and you will usually be taught by two different teachers. Lessons concentrate on building your knowledge of the language, focusing primarily on helping you increase your vocabulary and improve your grammar so that you attain the levels of accuracy you require. Lessons also work on improving your overall communicative proficiency and fluency, focusing on the four skills of speaking, listening, reading and writing. In addition to this you will work on specific pronunciation difficulties and expand the range of language you use in real-life situations.

The coursebook is the basis for much of the curriculum, with supplementary material taken from workbooks, other resources and authentic and digital material.

Every week your teachers make a class plan based on your needs, the course book and our Curriculum Framework, which is matched to the CEFR (Common European Framework of References for Languages) Can-do Statements. Learning objectives for the week are set and shared with students on Monday morning. These objectives are reviewed again at the end of each week.

You will also have regular revision and testing to help you review your learning and measure your progress. In addition, you'll have regular online tutorials with your main teacher where you can discuss progress and needs in more detail.

- WHERE?
- Dublin
 - London
 - Oxford
 - Edinburgh
 - Leeds
 - Worthing
 - Harrogate

- 20 lessons of 15hrs in England
- 20 lessons of 18.33 hrs in Ireland
- 2-6 check your level on page 27

TIMETABLE

LOCATION	TIME/DAY
IRELAND	09:00-13:00 Monday to Friday (20 lessons per week)
UK	09:30-13:00 Monday to Friday (20 lessons per week)



INTENSIVE COURSE

COURSE DETAILS

On the Intensive General English Course, you will follow the same programme as the Standard Course in the mornings. You will also have afternoon classes on Tuesdays, Wednesdays and Thursdays; in which you will have the opportunity to improve your communicative proficiency through discussions, topical debates, authentic materials and video.

Our modern teaching methods and use of supplementary materials give you the best opportunity to build your language skills and maximise the benefits of the time you spend with us.

30
lessons of 22hrs
in England

26
lessons of 55min
in Ireland

2-6
check your level
on page 27

TIMETABLE

LOCATION	TIME/DAY
IRELAND	09:00 - 13:00 Monday to Friday
	14.00 - 16.00 Tuesday to Thursday
UK	09.30 - 13.00 Monday to Friday
	14.00 - 16.30 Tuesday to Thursday

WHERE?

Dublin

London

Oxford

Edinburgh

Leeds

Worthing

Harrogate

COMBINATION COURSE

COURSE DETAILS

On our Combination Course, you will follow the Standard Course in the mornings and have two afternoons of individual lessons. These are designed to meet your individual requirements and give you the perfect opportunity to work on any specific language difficulties with your own teacher.

In advance of your course or during your first individual lesson, you will complete a **Needs Analysis** form with your teacher, in which you can identify particular areas to work on. This helps your teacher to plan your lessons according to your specific needs, and ensures you get the maximum benefit from your lessons.

+5
hours in addition
to Standard
Course

2-6
check your level
on page 27



TIMETABLE

LOCATION	TIME/DAY
IRELAND	09.00 - 13.00 Monday to Friday
	14.00 - 16.30 two afternoons per week
UK	09.30 - 13.00 Monday to Friday
	14.00 - 16.30 two afternoons per week



IELTS PREPARATION COURSES

If you plan to go to university in either Ireland or the UK, you may need to take the IELTS Exam. CES will help you to achieve the grade you need to take you to further education.

IELTS stands for International English Language Testing System. It is the most widely recognised university entry requirement in Europe. It tests the four language skills – listening, reading, writing and speaking. IELTS is a secure, valid and reliable test of real-life ability to communicate in English for education, immigration and professional accreditation purposes. Most universities require a score of between 5.5 and 7.5.

As the only 'official IELTS test centres' in their areas, CES Dublin, CES Harrogate and CES Leeds are able to offer the IELTS courses with the IELTS exam in-house. In our other centres the exams can be taken at an external centre, usually once or twice a month.

At CES Dublin, students have a choice of following the Standard General English course in the mornings and taking IELTS preparation lessons three afternoons per week (Tuesdays, Wednesdays and Thursdays); or of concentrating on the IELTS Course for a full twenty hours per week during the mornings (Mondays to Fridays). If you start your course at a low level, your progress will be carefully monitored and you will be encouraged at every stage of your studies. You will then join the IELTS Preparation Course when it is most appropriate for you. The ideal level for joining this course is Intermediate (B1).

- WHERE?**
- Dublin
 - London
 - Oxford
 - Edinburgh
 - Leeds
 - Worthing
 - Harrogate

- OFFICIAL IELTS TEST CENTRES**
- Dublin
 - Leeds
 - Harrogate

WHERE?

- Dublin
- London
- Oxford
- Worthing
- Harrogate

CAMBRIDGE EXAMINATION PREPARATION COURSES

COURSE DETAILS

Cambridge First Certificate in English (FCE) is an internationally recognised exam for people who need to prove they can use everyday written and spoken English at an upper-intermediate level, for work or study purposes. It is a great addition to any Curriculum Vitae!

Our Cambridge Examination Courses are designed to prepare students for one of the following Cambridge Examinations:

- First Certificate in English (FCE)
- Certificate in Advanced English (CAE)

The Cambridge Examinations usually take place four times per year, mid-March, mid-June, mid-August and mid-December. Our courses are planned to finish on the week before the exam will take place.

Students are advised to arrive one week before the course start date to allow time for assessment. We cannot accept a student for any examination course until CES has confirmed the student is at the appropriate level for their chosen examination. Please note there must be a minimum of 8 students for each level of the Cambridge Exam.

CES Harrogate is an official Cambridge Test Centre.

Your course will focus on improving your level of English, as well as on developing your exam techniques. At the end of each week, you will be given a progress test. You will take a complete IELTS examination in the last week of your course. If you plan to take the exam while you are studying at CES, our IELTS administrator or the Director of Studies will help you with registration.

5 days per week 3-6 check your level on page 27 **IELTS**
English for International Opportunity

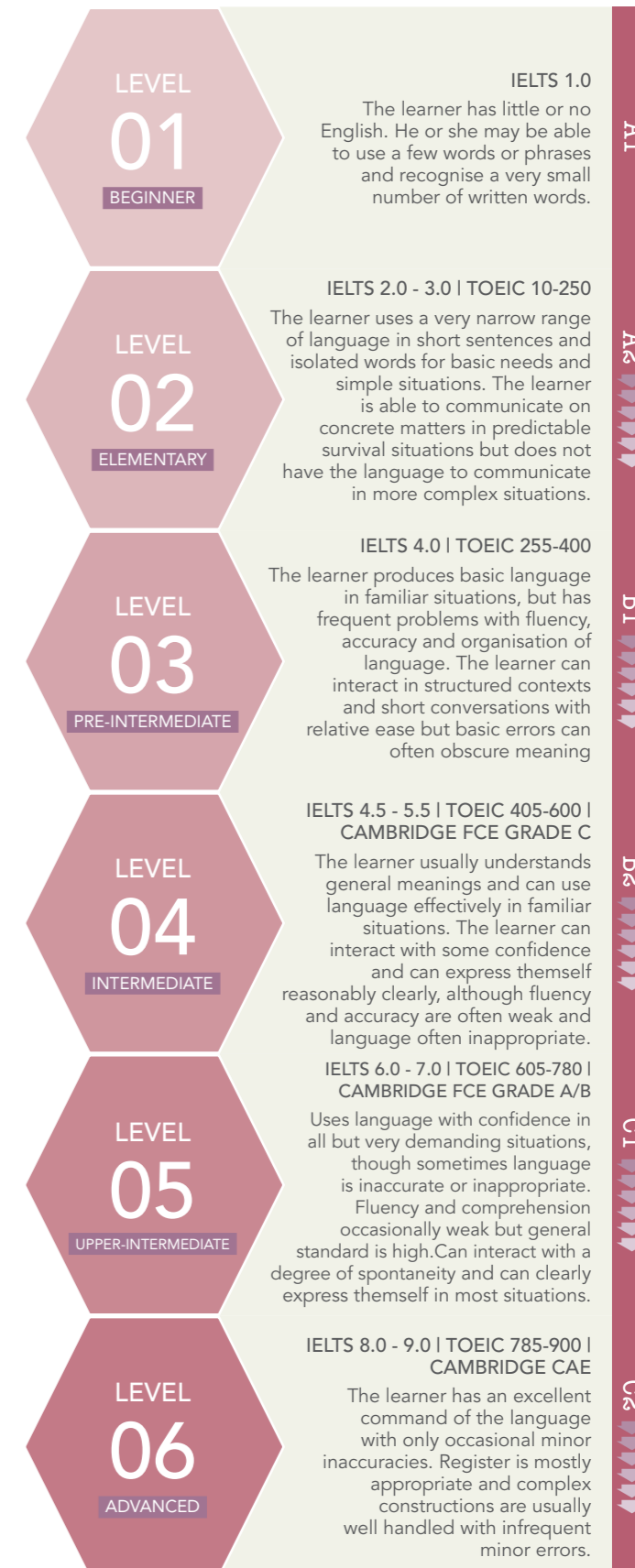
TIMETABLE

LOCATION	TIME/DAY
IRELAND	09:00 - 13:00 Monday to Friday (20 or 26 lessons) 14.00 - 16.00 Tuesday to Thursday
UK	09.30 - 13.00 Monday to Friday (20 lessons General English) 14.00 - 16.30 Tuesday to Thursday (10 lessons focused on IELTS Preparation)

5 days per week 3-6 check your level on the chart 30 lessons in England 22 lessons in Ireland

PROGRESS CHART

Find out which level is right for you. If you're not sure we can help match you with the appropriate level.



ENGLISH FOR PROFESSIONALS

COURSE DETAILS

CES is a dynamic centre of learning in today's rapidly changing world. Our course designers are very aware of the time constraints of our professional clients, so we help them to design a course that will cater for their social and business requirements.

CES has vast experience in delivering courses for management-level students in a number of professions. You will receive one-to-one tuition in language suitable to your profession and the social interaction you will encounter, giving you the confidence and vocabulary necessary for clear communication in the modern business world.

EXECUTIVE COURSES

Our Executive Courses are designed for business and professional people who wish to make the maximum amount of progress in the shortest possible time. Each course is designed to meet the specific needs and objectives of the participants. Clients return a completed Language Needs Analysis questionnaire to CES in advance to help us prepare the most effective course for your requirements.

Your teacher will discuss the details of your course with you again and you will have the opportunity to change the emphasis and content as you progress.

ENGLISH FOR INTERNATIONAL LAW

This course can be tailored to suit the specific requirements of the individual student by including such topics as criminal law, international law, human rights, public law and the judicial system.

COURSES FOR BUSINESS PEOPLE, THE FINANCIAL INDUSTRY & INSURANCE PERSONNEL

These courses cover negotiation skills, presentation skills, appropriate language for meetings and telephone conversations, writing skills for business letters and advertising, interview techniques and role-play.

MEDICAL PERSONNEL

Topics include: attending international conferences, delivering speeches or medical papers to a conference, meetings and interviews, and specific vocabulary and phrases for doctors and nurses.

AVIATION PERSONNEL

For a profession that requires correct terminology and clear communication at all times, CES can provide vocabulary and speaking lessons for air traffic controllers, pilots and airport managers.



- WHERE?**
- Dublin
 - London
 - Oxford
 - Edinburgh
 - Leeds
 - Worthing
 - Harrogate

GENERAL ENGLISH WITH BUSINESS

COURSE DETAILS

Students follow the Standard General English course in the mornings and take the business option three afternoons per week, on Tuesdays, Wednesdays and Thursdays.

The Business option is designed for students who wish to improve their communicative proficiency in a business environment. It can be tailored to suit the needs of any particular group of students and focuses primarily on the specialised language of Business English in the following areas:

- Meetings and negotiations
- Socialising and travel
- Oral and written presentations
- Analysing figures and describing trends
- Sales/Marketing/Advertising
- Understanding cultural differences
- Oral and written communication - telephone, faxes, e-mails, etc.

If you have any particular areas of Business English that you wish to focus on, the course can, under certain circumstances, be adapted to accommodate these.

This course will only take place if there is a minimum of 8 students

TIMETABLE - GENERAL ENGLISH WITH BUSINESS

LOCATION	TIME/DAY
IRELAND	14.00 - 16.00 Tuesday to Thursday
UK	14.00 - 16.30 Tuesday to Thursday

20
lessons of 45mins
in England

20
lessons of 55min
in Ireland

3-6
check your level
on page 27

30
lessons (22hrs)
in England

26
lessons of 55min
in Ireland

3-6
check your level
on page 27

5
days a week
(Mon-Fri)

MULTI-DESTINATION COURSE

COURSE DETAILS

Why not experience more than one of our fantastic locations? CES gives you the unique opportunity to study in three countries and in any of our centres. This course gives you the opportunity to live in both the UK and Ireland and learn more about the culture, history and social life of both countries.

Come and study in our Wimbledon school and experience one of the greatest cities in the world, London. Then come over to our Dublin centre for the next part of your programme to enjoy the famous Irish hospitality and visit some of the most breathtaking natural attractions in the world. Or why not start in the sunny south coast of England and then make your way to the city of the Rose, Leeds. You can also take in the University City of Oxford, beautiful Spa Town of Harrogate and culturally rich city of Edinburgh.

You can divide your stay as you wish and can start your course in either England, Scotland or Ireland – the choice is yours! Included in this very special and unique course is a return airplane ticket between the UK and Ireland. CES books and pays for this ticket. We organise everything for you to make sure that you get the most out of your stay.

The minimum course length to avail of the **free return flights** is 24 weeks but you can mix and match as you want.

Students can take the Standard or Intensive course or even a mixture of both.

LONG TERM

COURSE DETAILS

Why not come to CES and study on one of our courses for a minimum period of 24 weeks and stay as long you as you want. Students are able to really further their English language learning over a greater length of time. This allows students to really benefit during their stay. Students can join our many examination courses and take exams while in Ireland or the UK.

Students are allowed to take the Standard, Intensive, Combination or Examination Courses while studying in the school. Why not contact us for more information on all the different options that we can give you.

20
lessons
(standard)

30
lessons
(intensive)

4-6
check your level
on page 27

5
days a week
(Mon-Fri)

Students taking the Long Term course can also think about expanding their course with:

- CES Self-Access
- CES Social Programme
- IELTS Preparation
- Conversation Classes
- Business English
- One-to-One Lessons



WORK EXPERIENCE

WORK EXPERIENCE DETAILS

The Work Experience programme is the ideal way for students to further improve their English language level while developing their professional skills. Through hands-on experience you will gain a greater understanding of the international business environment.

The Work Experience programme is perfect for university students, graduates and young professionals aged 18 years or over and who have a minimum English level of Intermediate!

You must take a minimum of 4 weeks English language course with us before you start your Work Experience and you can have the Work Experience for a period of 4 weeks to 6 months.

DURATION	BASIS	OPTIONS
UP TO 5 WEEKS	Unpaid	Cannot specify sector or type of work. May be in a charity organisation - shop - office. May be in the hospitality sector.
6 - 12 WEEKS	Unpaid	May request sector or type of work but this cannot be guaranteed. May be in a charity organisation - shop - office. Likely to be general administration tasks.
3 - 6 MONTHS	Unpaid	May request sector or type of work. Is likely to secure placement relevant to experience/qualifications/level of English. The work will have a high degree of administrative tasks and will be a junior position.

ENGLISH FOR TEACHERS / CLIL

COURSE DETAILS

English for Teachers/CLIL is intended for non-native English Teachers who wish to refresh their own language skills and, at the same time, examine different teaching approaches and methods. It provides opportunities to discuss and share ideas with colleagues from Europe and beyond.

The sessions involve a variety of workshop, communicative and lecture formats, with 10 hours per week devoted to language usage, awareness and development.

A further 10 hours is dedicated to the exploration of eclectic, pragmatic methodologies. We can also offer a focused primary / secondary course if numbers permit.

THE LANGUAGE COMPONENT INCLUDES:

- Advanced Language Usage
- Lexical Development
- Integrated Skills
- Varieties of English
- Register and Idioms
- Pronunciation, Stress and Intonation

THE METHODOLOGY COMPONENT INCLUDES:

- Computer Assisted Language Learning (CALL)
- The European Language Portfolio
- Task Based Learning
- Authentic Materials
- Exploiting the Course Book

- Music and Song
- Drama in the Classroom
- The Lexical Approach
- Materials Development
- Motivating the Younger Learner

AFTERNOON LECTURES

- The Political and Historical Background of Ireland (Ireland) / British Cultural Issues and Politics (UK)
- Anglo-Irish Literature (Ireland) / English Literature (UK)
- CLIL (Content and Language Integrated Learning)
- British Food – A Revival
- British Popular Culture and The World

WORKSHOPS

- Traditional Irish Music (Ireland only)
- The Irish language and Hiberno English (Ireland only)

TIMETABLE

SCHOOL	TIME	DAY
LONDON	9.30-13.00	Monday-Friday
	14.30-16.30	lectures and visits
WORTHING	9.30-13.00	Monday-Friday
	14.30-16.30	lectures and visits
DUBLIN	9.00-13.00	Mon-Fri
	14.00-16.30	lectures and visits

WHERE?

Dublin

London

Oxford

Edinburgh

Leeds

Worthing

Harrogate



WHERE?

Dublin

London

Worthing



ACCOMMODATION

HOMESTAY

One of the best ways to learn more about the people of Ireland and the UK is to choose homestay accommodation. Family life is informal and the people are welcoming, friendly and talkative, so you will have plenty of opportunities to practise your English. All homestays are carefully selected and visited regularly to ensure consistently high standards.

DUBLIN

We have a huge selection of homestay accommodation available in Dublin. All our homestays are located in the Dublin suburbs with an average travel time to the city centre of 30-40 minutes by bus or train. Homestay accommodation includes breakfast and dinner, Monday to Friday, and on weekends students also receive their lunch.

LONDON

All of our homestays are located within a 30-45 minute travel time by foot, bus, train or tram from our school in Wimbledon. During the off-peak season there is a larger selection of homestays within walking distance. These cannot be guaranteed. Homestay accommodation includes breakfast and dinner 7 days a week.

OXFORD

Our Oxford homestays are located in 2 areas close to the school. We have homestays within walking distance of the school in Wheatley, as well as a large selection of homestays in the beautiful market town of Thame, only 15 minutes away by bus. Homestay accommodation includes breakfast and dinner 7 days a week.

EDINBURGH

Our Edinburgh homestays are located across many areas of the city, with a maximum travel time of 40 minutes from the school (and a typical travel time of 20 minutes). Homestay accommodation includes breakfast and dinner 7 days a week.

LEEDS

CES is able to offer our students in Leeds a large selection of homestay accommodation located in Leeds. Homestay accommodation includes breakfast, packed lunch and dinner 7 days a week. Average travel time from homestays and the school is about 30-40 minutes by public transport.

WORTHING

All our Worthing homestays are located in the Worthing area. During the off-peak season most homestays are within walking distance of the school and of the town and seafront. Homestay accommodation includes breakfast, packed lunch and dinner 7 days a week.

HARROGATE

All our homestays are located in the Harrogate area and the vast majority are within walking distance of the school and the beautiful town centre. Homestay accommodation includes breakfast and dinner, Monday to Friday, and on weekends students also receive their lunch.



HOTELS / GUESTHOUSES

Choose from a selection of hotels and guesthouses offered by CES in numerous locations located near our centres. All hotels and guesthouses are officially rated and have a number of different facilities for you to use.

DUBLIN

There are a huge amount of options available to stay within walking distance of our school in Dublin. We can offer hotel accommodation from 3 stars up, along with a large selection of wonderful guesthouses.

LONDON

There are a large number of options available to stay within walking distance of our school in Wimbledon. We can offer hotel accommodation from 3 stars up, along with a large selection of wonderful guesthouses. We can also offer you a wide selection of hotels in and around the centre of London city.

OXFORD

We can offer a varied selection of hotels located in the centre of Oxford 6 miles from the school. There are also a number of local guesthouses located in Wheatley and in Thame.

EDINBURGH

There are a large number of options available to stay within walking distance of our school in Edinburgh. We can offer hotel accommodation from 3 stars up, along with a large selection of wonderful guesthouses.

LEEDS

We can offer a varied selection of hotels located in the centre of Leeds city and within walking distance of the school itself. There are also a number of local guesthouses available nearby.

WORTHING

As a popular sea-side town, Worthing has a number of hotel and bed and breakfast options available. Early booking is advisable in the most popular of destinations.

HARROGATE

As it boasts one of the largest conference centres in the country, Harrogate has a huge selection of Hotels, Guest Houses and Serviced Apartments. Just contact our registration team and we will find something suitable.

RESIDENTIAL

Our residential accommodation provides comfort and security away from home and gives you the opportunity to be part of an international student community.

DUBLIN

CES Dublin has 2 year-round self-catering houses located close to each other and 4 km from the city centre. We offer a selection of single, twin and double rooms with en-suite facilities. All bedrooms have satellite TV, a study desk and free Wi-Fi access. Students share a kitchen and living room.

LONDON

CES is delighted to announce that it will be using the self-catering student residences: Beaumont Court (near Kings Cross) and Great Suffolk Street (near Waterloo) for our London school. They are 40 minutes and 35 minutes respectively from Wimbledon by public transport. All rooms are single en-suite and fully furnished.

OXFORD

Contact us for availability

EDINBURGH

Contact us for availability

LEEDS

CES is delighted to announce that it will be using the Liberty Park Residence for our Leeds school. The self-catering residence is located only 5-10 minutes' walk to the school in the centre of Leeds. All rooms are single en-suite and fully furnished. Available during the summer months only.

WORTHING

No residential available.



GENERAL INFO

INSURANCE

Students are not insured by CES or your homestay against illness, theft or loss of personal belongings and the school accepts no responsibility in the event of these. We advise all students to take out full medical and personal insurance cover prior to departure. Students travelling from EU countries should bring their European Health Insurance card with them and students from non-EU countries must organise medical insurance. This is available on request at each school and is a visa requirement.

SUMMER COURSES

During the peak summer period, courses take place at other city premises in addition to the main school buildings. These are centrally located and within walking distance of all amenities.

AIRPORT TRANSFERS TO HOMESTAY

Please see our price list for more details.

SPECIAL DIETARY REQUIREMENTS

CES reserves the right to impose a surcharge where requests for special dietary requirements are made.

VISA

Students from EU member countries do not need a visa to enter Ireland or the UK. Students from non-EU countries should check with their nearest embassy or consulate as a Study Visa may be required. For further information visit:-
Ireland: www.justice.ie
UK: www.ukvisas.gov.uk

COUNSELLING AND WELFARE

CES have a full-time Accommodation Officer in all our schools to look after students' welfare and deal with any problems or worries that you may have.

SCHOOL HOLIDAYS

The school is open throughout the year, with the exception of two weeks at Christmas. Please see our price list for course dates and national holidays.

PROMOTIONAL PHOTOGRAPHY

Sometimes CES or our representatives take photographs and videos during our courses or social activities which may be used for promotional purposes. Please advise at the time of booking if you do not wish to appear in any promotional material.

DATA PROTECTION

In order to fulfil our obligations to you and in some cases to the British Authorities it is necessary for us to see and copy your passport and visa if appropriate. We also need to have your contact details (if you are not staying in CES accommodation) and to know who your next of kin is. By enrolling you therefore agree to provide these and keep us informed of any changes. You give permission to share these details at a time of inspection by a British Council or other inspector or government official

PROGRAMME ACTIVITIES

Students can also see all social programme activities on their mobile phones via the Front Desk App.

SOCIAL PROGRAMME

“So much to see and do in our adult social programme”

The adult social and cultural programme in each CES school will form an important part of your stay.

As well as being a great way to improve your English, our social programme includes visits and tours that enable you to see your local city or town through the eyes of local people.

Each school has a dedicated team of 'Yellow Shirts' responsible for coming up with new and exciting things for you to see and do. In each CES centre there is a varied, dynamic social and cultural programme in operation that will have you busy with things to do most afternoons or evenings.

During your stay we will arrange:-

- An orientation tour on your first day
- Visits to the museums and art galleries close to your learning centre
- Visits to areas of historic or natural scenic beauty
- Movie afternoons
- History and Nature walks

- Quizzes and games
- Sports afternoons – football – bowling – baseball
- Afternoon dance and singing lessons
- Saturday or full-weekend tours to the most popular historic or tourist sites in Ireland and the UK

We are also aware that you will need things to do after dinner so we arrange evening activities!

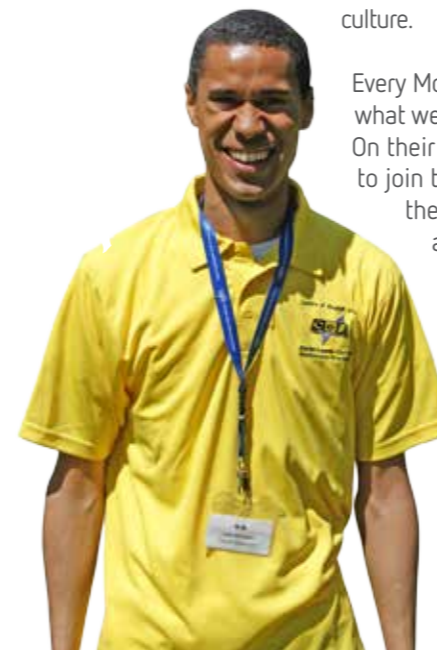
- Student party nights
- Pub quizzes
- Disco nights
- Theatre visits
- International food evenings
- Barbeques
- Concert tickets

If there is something you really want to see, or if you need any more information about any of our tours, excursions or activities, just ask your local CES 'Yellow Shirt'.

ces YELLOW SHIRTS

Hi, I'm Isak and I have worked as a CES 'Yellow Shirt' for the last 3 years. I think it is a fantastic job as I get to meet people from all over the world. Last year in CES, we had students from over 66 different countries.

My job is also very varied and that means there is always something new to see or do. Part of what I do is to arrange tours, excursions and visits for our students while they are here in CES. All the CES Yellow Shirts aim to ensure that students see the best that each of our locations has to offer in terms of history and culture.



Every Monday we inform new students about what we have planned for the week ahead. On their first afternoon, students are invited to join the 'Orientation Tour' which gives them a better idea of the local area and where all the main transport links are. We do our best to have as many varied activities in the afternoons and evenings!

We arrange sports matches for football and basketball and also arrange full day excursions or weekends away to places of historic or cultural interest and I accompany some of the tours!

7 DESTINATIONS... ENDLESS POSSIBILITIES



DUBLIN



LONDON



OXFORD



EDINBURGH



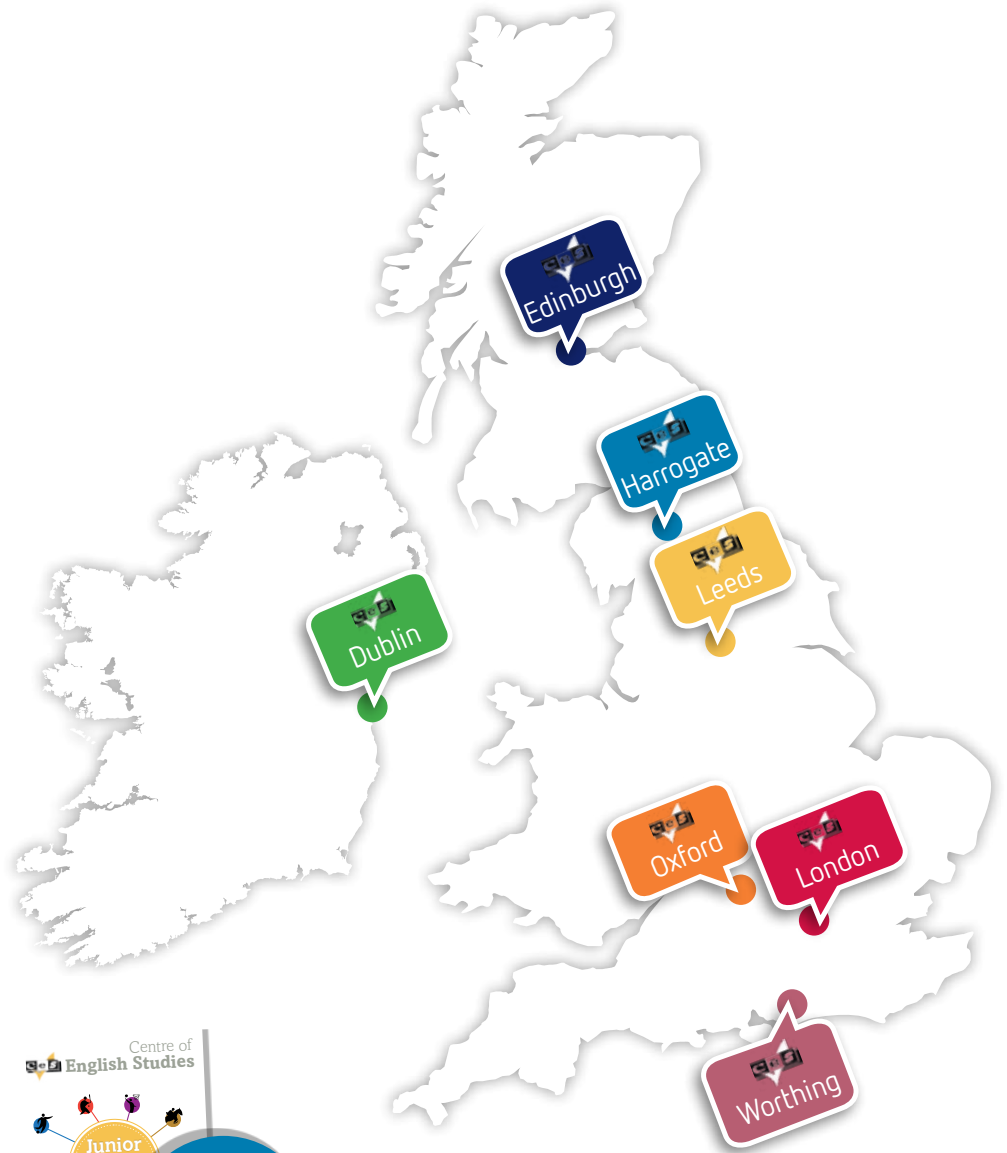
LEEDS



WORTHING



HARROGATE



Centre of English Studies



JUNIOR BROCHURE
AVAILABLE NOW

CONTACT US
FOR A COPY

DUBLIN

31 Dame Street,
Dublin 2,
D02 CX73, Ireland

+353 1 6714233
+353 1 6714425
info@ces-schools.com



WORTHING

12 Stoke Abbott Road,
Worthing, West Sussex,
BN11 1HE, England

+44 1903 231330
+44 1903 200953
worthing@ces-schools.com